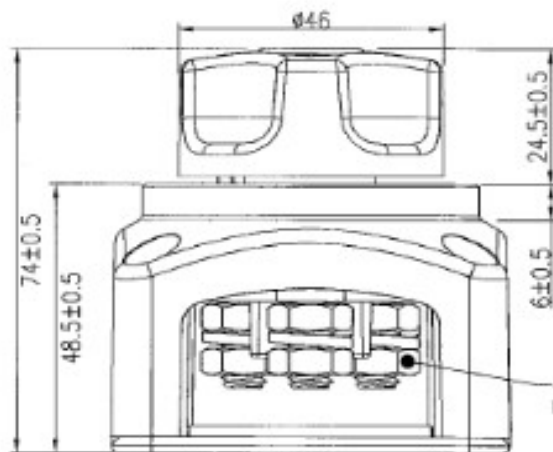
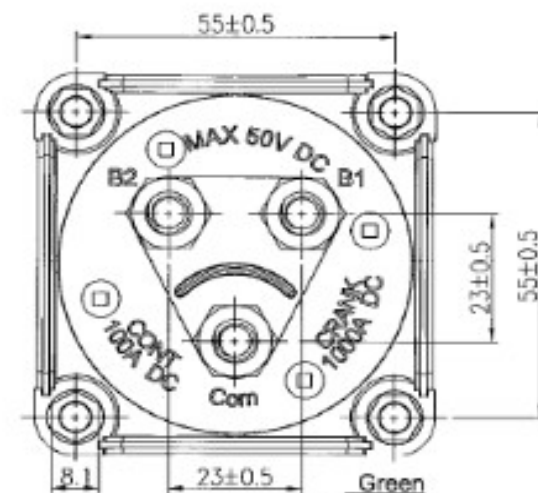
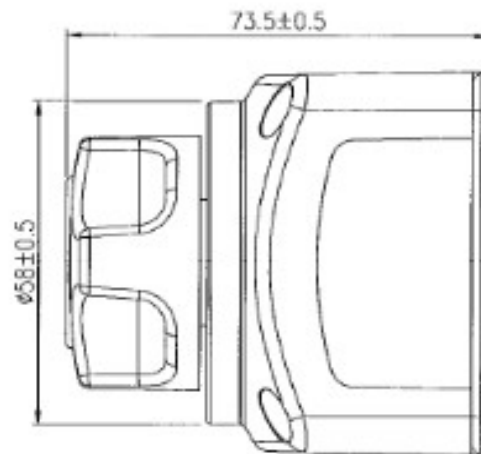
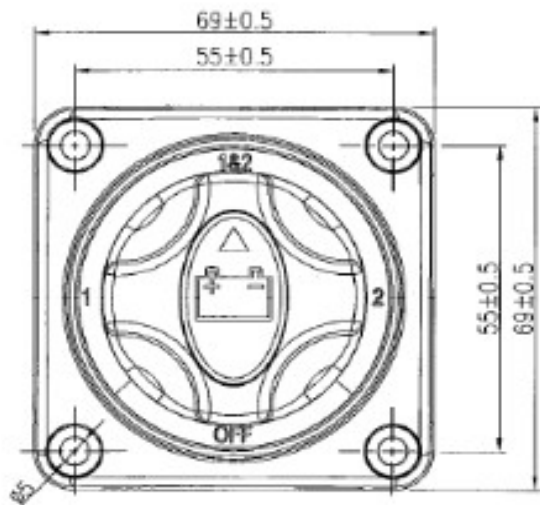


Continuous Rating	100 Amps 12-50 VDC	Mounting Hole		Circuit Diagram	
Intermittent Rating	300 Amps	A	B	OFF	
Continuous Rating for UL-1107 requirement	100 Amps				1
Cranking Rating	1000 Amps			2	
Insulation Resistance	DC 1000V 100M ohm Min.				1&2
Dielectric Strength	DC 2000V 1 minute AC 1000V 1 minute				
Operation Temperature	-20°C-80°C				
Switch Function	OFF / 1 / 2 / 1&2				
Actuation Force	5±0.5 Kgf-cm				



Material :
 Actuator,Housing,Cover : PBT(UL flame:94V-0)
 Contact, Screw : copper alloy
 Nut : nickel plated brass
 Washer : SUS316

Note:
 1.Tolerance is ±0.5mm(0.02") unless other notice
 2.Side plates : 3PCS



For EO021 only
 Osculati pack : white box + colored label

Color layout

Date	Name	Description	△ NO	Drawn	Checked	Approved	Customer No.	Model Name	REV.
				8/20/19			14.923.12	Battery Switch	0
							mm	Model No.	

